



DAVID FODEN.COM

jordan fishwick

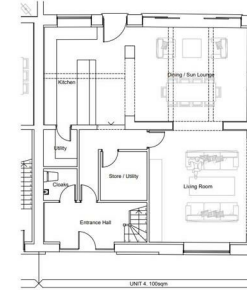
Wybersley Road High Lane Stockport



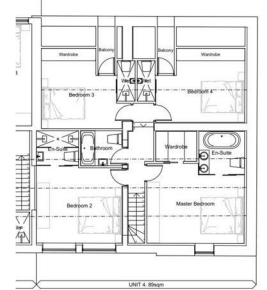
Wybersley Road High Lane Stockport SK6 8HB

£825,000

Ground Floor



First Floor



The Property

*** MORE DETAILS COMING SOON - READY FOR SUMMER 2023 - GET IN TOUCH TODAY *** Set within a Grade II listed barn on the cusp of the Cheshire Countryside and steeped in local history, a stunning, delightful and thoughtfully designed conversion. Select development of only FOUR units, to be finished to the highest of standards mixing both contemporary and character. Bespoke kitchens with island units, luxury bathrooms, timber framed carport parking and private gardens. Offering both three double bedroom and four double bedrooms options. Wybersley Farm Barns are sure to impress. Unit 2 - From £650,000



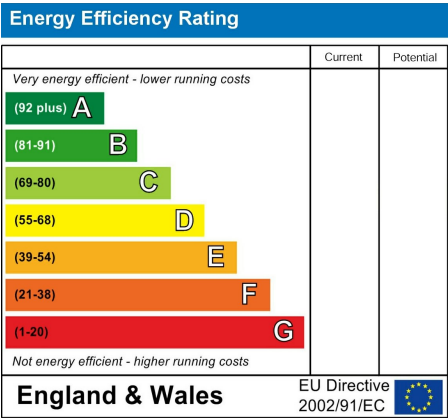
- Grade II Listed Development
- Four Double Bedrooms & Two En-Suites
- Well Balanced Accommodation
- Excellent Location Adjoining Farmland
- High Quality Throughout
- 30ft x 15ft Open Plan Luxury Kitchen Living Space
- Bespoke Barn Conversion
- Convenient Position
- 10 Year Warranty
- Car Port Parking

PostcodeSK6 8HB

EPC Rating

Local AuthorityNew Build

Council Tax





These particulars are believed to be accurate but they are not guaranteed and do not form a contract. Neither Jordan Fishwick nor the vendor or lessor accept any responsibility in respect of these particulars, which are not intended to be statements or representations of fact and any intending purchaser or lessee must satisfy himself by inspection or otherwise as to the correctness of each of the statements contained in these particulars. Any floorplans on this brochure are for illustrative purposes only and are not necessarily to scale.

Offices at: Chorlton, Didsbury, Disley, Hale, Glossop, Macclesfield, Manchester Deansgate, Manchester Whitworth Street, New Mills, Sale, Wilmslow and Withington

14 Market Street, Disley, Cheshire, SK12 2AA

01663 76 78 78

disley@jordanfishwick.co.uk

www.jordanfishwick.co.uk